

Product datasheet for **TA362303**

ABLIM3 Rabbit Polyclonal Antibody

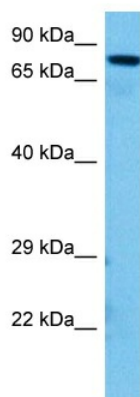
Product data:

Product Type:	Primary Antibodies
Applications:	WB
Reactivity:	Human
Host:	Rabbit
Clonality:	Polyclonal
Immunogen:	The immunogen is a synthetic peptide directed towards the middle region of human ABLIM3
Specificity:	Expected reactivity: Human
Formulation:	Liquid. Purified antibody supplied in 1x PBS buffer with 0.09% (w/v) sodium azide and 2% sucrose. <i>Note that this product is shipped as lyophilized powder to China customers.</i>
Concentration:	lot specific
Purification:	Affinity purified
Conjugation:	Unconjugated
Storage:	For short term use, store at 2-8°C up to 1 week. For long term storage, store at -20°C in small aliquots to prevent freeze-thaw cycles.
Stability:	Shelf life: one year from despatch.
Predicted Protein Size:	75 kDa
Gene Name:	actin binding LIM protein family member 3
Database Link:	NP_001287944.1 Entrez Gene 22885 Human O94929
Background:	The LIM domain is a double zinc finger structure that promotes protein-protein interactions. LIM domain proteins, such as ABLIM3, play roles in embryonic development, cell lineage determination, and cancer.
Synonyms:	abLIM-3; HMFN1661; KIAA0843
Protein Pathways:	Axon guidance



[View online »](#)

Product images:



Host: Rabbit

Target Name: ABLIM3

Sample Type: Mesenchymoma Tumor Lysate

Antibody Dilution: 1.0 μ g/ml

Host: Rabbit

Target Name: ABLIM3

Sample Tissue: Human Mesenchymoma Tumor lysates

Antibody Dilution: 1 μ g/ml