

Product datasheet for **TA362293**

Genethonin 1 (STBD1) Rabbit Polyclonal Antibody

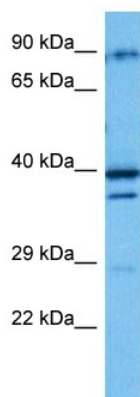
Product data:

Product Type:	Primary Antibodies
Applications:	WB
Reactivity:	Human
Host:	Rabbit
Clonality:	Polyclonal
Immunogen:	The immunogen is a synthetic peptide directed towards the C terminal region of human STBD1
Specificity:	Expected reactivity: Human
Formulation:	Liquid. Purified antibody supplied in 1x PBS buffer with 0.09% (w/v) sodium azide and 2% sucrose.
Concentration:	lot specific
Purification:	Affinity purified
Conjugation:	Unconjugated
Storage:	For short term use, store at 2-8°C up to 1 week. For long term storage, store at -20°C in small aliquots to prevent freeze-thaw cycles.
Stability:	Shelf life: one year from despatch.
Predicted Protein Size:	39 kDa
Gene Name:	starch binding domain 1
Database Link:	NP_003934.1 Entrez Gene 8987 Human O95210
Background:	Acts as a cargo receptor for glycogen. Delivers its cargo to an autophagic pathway called glyophagy, resulting in the transport of glycogen to lysosomes.
Synonyms:	FLJ41801; Genethonin-1; GENEX3414; GENX-3414
Protein Families:	Transmembrane



[View online »](#)

Product images:



Host: Rabbit
Target Name: STBD1
Sample Type: RPMI-8226 Cell Lysate
Antibody Dilution: 1.0 μ g/ml

Host: Rabbit
Target Name: STBD1
Sample Tissue: Human RPMI 8226 Whole Cell lysates
Antibody Dilution: 1 μ g/ml