

## Product datasheet for **TA362274**

### Cathepsin W (CTSW) Rabbit Polyclonal Antibody

#### Product data:

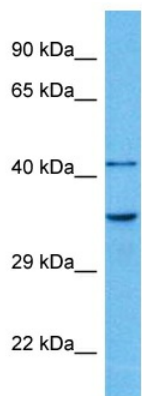
Product Type:	Primary Antibodies
Applications:	WB
Reactivity:	Human
Host:	Rabbit
Clonality:	Polyclonal
Immunogen:	The immunogen is a synthetic peptide directed towards the middle region of human CTSW
Specificity:	<b>Expected reactivity:</b> Human
Formulation:	Liquid. Purified antibody supplied in 1x PBS buffer with 0.09% (w/v) sodium azide and 2% sucrose. <i>Note that this product is shipped as lyophilized powder to China customers.</i>
Concentration:	lot specific
Purification:	Affinity purified
Conjugation:	Unconjugated
Storage:	For short term use, store at 2-8°C up to 1 week. For long term storage, store at -20°C in small aliquots to prevent freeze-thaw cycles.
Stability:	Shelf life: one year from despatch.
Predicted Protein Size:	42 kDa
Gene Name:	cathepsin W
Database Link:	<a href="#">NP_001326.2</a> <a href="#">Entrez Gene 1521 Human</a> <a href="#">P56202</a>
Background:	The protein encoded by this gene, a member of the peptidase C1 family, is a cysteine proteinase that may have a specific function in the mechanism or regulation of T-cell cytolytic activity. The encoded protein is found associated with the membrane inside the endoplasmic reticulum of natural killer and cytotoxic T-cells. Expression of this gene is up-regulated by interleukin-2.
Synonyms:	lymphopain; LYPN
Protein Families:	Druggable Genome, Protease



[View online »](#)

Protein Pathways: Lysosome

### Product images:



Host: Rabbit  
Target Name: CTSW  
Sample Type: A549 Cell Lysate  
Antibody Dilution: 1.0 $\mu$ g/ml

Host: Rabbit  
Target Name: CTSW  
Sample Tissue: Human A549 Whole Cell lysates  
Antibody Dilution: 1  $\mu$ g/ml