

## Product datasheet for **TA362270**

### TOR1AIP1 Rabbit Polyclonal Antibody

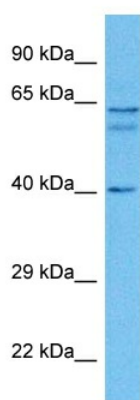
#### Product data:

Product Type:	Primary Antibodies
Applications:	WB
Reactivity:	Human
Host:	Rabbit
Clonality:	Polyclonal
Immunogen:	The immunogen is a synthetic peptide directed towards the C terminal region of human TOR1AIP1
Specificity:	<b>Expected reactivity:</b> Human
Formulation:	Liquid. Purified antibody supplied in 1x PBS buffer with 0.09% (w/v) sodium azide and 2% sucrose. <i>Note that this product is shipped as lyophilized powder to China customers.</i>
Concentration:	lot specific
Purification:	Affinity purified
Conjugation:	Unconjugated
Storage:	For short term use, store at 2-8°C up to 1 week. For long term storage, store at -20°C in small aliquots to prevent freeze-thaw cycles.
Stability:	Shelf life: one year from despatch.
Predicted Protein Size:	41 kDa
Gene Name:	torsin 1A interacting protein 1
Database Link:	<a href="#">NP_001254507.1</a> <a href="#">Entrez Gene 26092 Human</a> <a href="#">Q5JTV8-2</a>
Background:	This gene encodes a type 2 integral membrane protein that binds A- and B-type laminins. The encoded protein localizes to the inner nuclear membrane and may be involved in maintaining the attachment of the nuclear membrane to the nuclear lamina during cell division. Alternate splicing results in multiple transcript variants.
Synonyms:	DKFZp586G011; FLJ13142; LAP1B; MGC3413



[View online »](#)

## Product images:



Host: Rabbit  
Target Name: TOR1AIP1  
Sample Type: OVCAR-3 Cell Lysate  
Antibody Dilution: 1.0 $\mu$ g/ml

Host: Rabbit  
Target Name: TOR1AIP1  
Sample Tissue: Human OVCAR-3 Whole Cell  
lysates  
Antibody Dilution: 1 ug/ml