

## Product datasheet for **TA362269**

### PPEF1 Rabbit Polyclonal Antibody

#### Product data:

Product Type:	Primary Antibodies
Applications:	WB
Reactivity:	Human
Host:	Rabbit
Clonality:	Polyclonal
Immunogen:	The immunogen is a synthetic peptide directed towards the middle region of human PPEF1
Specificity:	<b>Expected reactivity:</b> Human
Formulation:	Liquid. Purified antibody supplied in 1x PBS buffer with 0.09% (w/v) sodium azide and 2% sucrose. <i>Note that this product is shipped as lyophilized powder to China customers.</i>
Concentration:	lot specific
Purification:	Affinity purified
Conjugation:	Unconjugated
Storage:	For short term use, store at 2-8°C up to 1 week. For long term storage, store at -20°C in small aliquots to prevent freeze-thaw cycles.
Stability:	Shelf life: one year from despatch.
Predicted Protein Size:	65 kDa
Gene Name:	protein phosphatase with EF-hand domain 1
Database Link:	<a href="#">NP_006231.2</a> <a href="#">Entrez Gene 5475 Human</a> <a href="#">O14829-2</a>
Background:	This gene encodes a member of the serine/threonine protein phosphatase with EF-hand motif family. The protein contains a protein phosphatase catalytic domain, and at least two EF-hand calcium-binding motifs in its C terminus. Although its substrate(s) is unknown, the encoded protein has been suggested to play a role in specific sensory neuron function and/or development. This gene shares high sequence similarity with the Drosophila retinal degeneration C (rdgC) gene. Several alternatively spliced transcript variants, each encoding a distinct isoform, have been described.

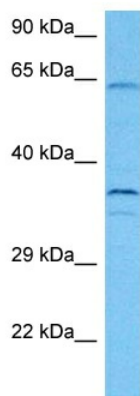


[View online »](#)

Synonyms: OTTHUMP00000023006; PP7; PPEF; PPEF-1; PPP7C

Protein Families: Druggable Genome, Phosphatase

### Product images:



Host: Rabbit  
Target Name: PPEF1  
Sample Type: 293T Cell Lysate  
Antibody Dilution: 1.0 $\mu$ g/ml

Host: Rabbit  
Target Name: PPEF1  
Sample Tissue: Human 293T Whole Cell lysates  
Antibody Dilution: 1 $\mu$ g/ml