

Product datasheet for **TA362267**

CAPRIN2 Rabbit Polyclonal Antibody

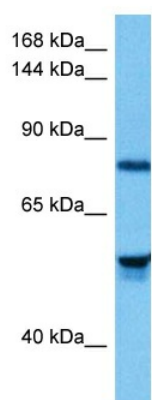
Product data:

Product Type:	Primary Antibodies
Applications:	WB
Reactivity:	Human
Host:	Rabbit
Clonality:	Polyclonal
Immunogen:	The immunogen is a synthetic peptide directed towards the middle region of human CAPRIN2
Specificity:	Expected reactivity: Human
Formulation:	Liquid. Purified antibody supplied in 1x PBS buffer with 0.09% (w/v) sodium azide and 2% sucrose. <i>Note that this product is shipped as lyophilized powder to China customers.</i>
Concentration:	lot specific
Purification:	Affinity purified
Conjugation:	Unconjugated
Storage:	For short term use, store at 2-8°C up to 1 week. For long term storage, store at -20°C in small aliquots to prevent freeze-thaw cycles.
Stability:	Shelf life: one year from despatch.
Predicted Protein Size:	87 kDa
Gene Name:	caprin family member 2
Database Link:	NP_001002259.1 Entrez Gene 65981 Human Q6IMN6-4
Background:	The protein encoded by this gene may regulate the transport of mRNA. It may play a role in the differentiation of erythroblasts. Multiple transcript variants encoding different isoforms have been found for this gene.
Synonyms:	C1QDC1; caprin-2; EEG-1; EEG1; FLJ11391; FLJ22569; KIAA1873; MGC102894; MGC134847; MGC134848



[View online »](#)

Product images:



Host: Rabbit
Target Name: CAPRIN2
Sample Type: Neurofibroma Tumor Lysate
Antibody Dilution: 1.0 μ g/ml

Host: Rabbit
Target Name: CAPRIN2
Sample Tissue: Human Neurofibroma Tumor lysates
Antibody Dilution: 1 μ g/ml