

Product datasheet for **TA362263**

Topoisomerase III alpha (TOP3A) Rabbit Polyclonal Antibody

Product data:

| | |
|-------------------------|---|
| Product Type: | Primary Antibodies |
| Applications: | WB |
| Reactivity: | Human |
| Host: | Rabbit |
| Clonality: | Polyclonal |
| Immunogen: | The immunogen is a synthetic peptide directed towards the C terminal region of Human TOP3A |
| Specificity: | Expected reactivity: Human |
| Formulation: | Liquid. Purified antibody supplied in 1x PBS buffer with 0.09% (w/v) sodium azide and 2% sucrose. <i>Note that this product is shipped as lyophilized powder to China customers.</i> |
| Concentration: | lot specific |
| Purification: | Affinity purified |
| Conjugation: | Unconjugated |
| Storage: | For short term use, store at 2-8°C up to 1 week. For long term storage, store at -20°C in small aliquots to prevent freeze-thaw cycles. |
| Stability: | Shelf life: one year from despatch. |
| Predicted Protein Size: | 101 kDa |
| Gene Name: | topoisomerase (DNA) III alpha |
| Database Link: | NP_004609.1 Entrez Gene 7156 Human Q13472-3 |
| Background: | This gene encodes a DNA topoisomerase, an enzyme that controls and alters the topologic states of DNA during transcription. This enzyme catalyzes the transient breaking and rejoining of a single strand of DNA which allows the strands to pass through one another, thus reducing the number of supercoils and altering the topology of DNA. This enzyme forms a complex with BLM which functions in the regulation of recombination in somatic cells. Alternative splicing results in multiple transcript variants encoding different isoforms. |



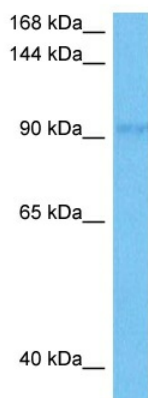
[View online »](#)

Synonyms: TOP3

Protein Families: Druggable Genome

Protein Pathways: Homologous recombination

Product images:



Host: Rabbit
Target Name: TOP3A
Sample Type: PC-3 Cell Lysate
Antibody Dilution: 1.0 μ g/ml

Host: Rabbit
Target Name: TOP3A
Sample Tissue: Human PC-3 Whole Cell lysates
Antibody Dilution: 1 μ g/ml