

## Product datasheet for **TA362260**

### AP4M1 Rabbit Polyclonal Antibody

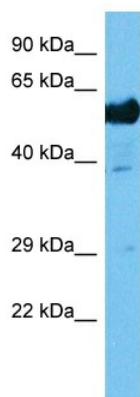
#### Product data:

Product Type:	Primary Antibodies
Applications:	WB
Reactivity:	Human
Host:	Rabbit
Clonality:	Polyclonal
Immunogen:	The immunogen is a synthetic peptide directed towards the N terminal region of human AP4M1
Specificity:	<b>Expected reactivity:</b> Human
Formulation:	Liquid. Purified antibody supplied in 1x PBS buffer with 0.09% (w/v) sodium azide and 2% sucrose. <i>Note that this product is shipped as lyophilized powder to China customers.</i>
Concentration:	lot specific
Purification:	Affinity purified
Conjugation:	Unconjugated
Storage:	For short term use, store at 2-8°C up to 1 week. For long term storage, store at -20°C in small aliquots to prevent freeze-thaw cycles.
Stability:	Shelf life: one year from despatch.
Predicted Protein Size:	49 kDa
Gene Name:	adaptor related protein complex 4 mu 1 subunit
Database Link:	<a href="#">NP_004713.2</a> <a href="#">Entrez Gene 9179 Human</a> <a href="#">O00189</a>
Background:	This gene encodes a subunit of the heterotetrameric AP-4 complex. The encoded protein belongs to the adaptor complexes medium subunits family. This AP-4 complex is involved in the recognition and sorting of cargo proteins with tyrosine-based motifs from the trans-golgi network to the endosomal-lysosomal system.
Synonyms:	CPSQ3; MU-4; MU-ARP2; mu4; Mu4-adaptin; MUARP2; OTTHUMP00000206630
Protein Pathways:	Lysosome



[View online »](#)

## Product images:



Host: Rabbit  
Target Name: AP4M1  
Sample Type: Ovary Tumor Lysate  
Antibody Dilution: 1.0 $\mu$ g/ml

Host: Rabbit  
Target Name: AP4M1  
Sample Tissue: Human Ovary Tumor lysates  
Antibody Dilution: 1 $\mu$ g/ml