

## Product datasheet for **TA362259**

### PCYT1B Rabbit Polyclonal Antibody

#### Product data:

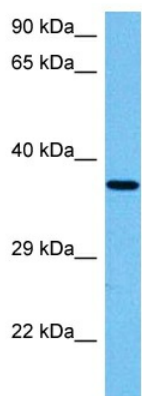
Product Type:	Primary Antibodies
Applications:	WB
Reactivity:	Human
Host:	Rabbit
Clonality:	Polyclonal
Immunogen:	The immunogen is a synthetic peptide directed towards the C terminal region of human PCYT1B
Specificity:	<b>Expected reactivity:</b> Human
Formulation:	Liquid. Purified antibody supplied in 1x PBS buffer with 0.09% (w/v) sodium azide and 2% sucrose. <i>Note that this product is shipped as lyophilized powder to China customers.</i>
Concentration:	lot specific
Purification:	Affinity purified
Conjugation:	Unconjugated
Storage:	For short term use, store at 2-8°C up to 1 week. For long term storage, store at -20°C in small aliquots to prevent freeze-thaw cycles.
Stability:	Shelf life: one year from despatch.
Predicted Protein Size:	38 kDa
Gene Name:	phosphate cytidyltransferase 1, choline, beta
Database Link:	<a href="#">NP_001156736.1</a> <a href="#">Entrez Gene 9468 Human</a> <a href="#">Q9Y5K3-3</a>
Background:	The protein encoded by this gene belongs to the cytidyltransferase family. It is involved in the regulation of phosphatidylcholine biosynthesis. Several alternatively spliced transcript variants encoding different isoforms have been found for this gene.
Synonyms:	CCT-beta; CCTB; CTB
Protein Families:	Stem cell - Pluripotency



[View online »](#)

Protein Pathways: Glycerophospholipid metabolism, Metabolic pathways

### Product images:



Host: Rabbit  
Target Name: PCYT1B  
Sample Type: PANC1 Cell Lysate  
Antibody Dilution: 1.0 $\mu$ g/ml

Host: Rabbit  
Target Name: PCYT1B  
Sample Tissue: Human PANC1 Whole Cell lysates  
Antibody Dilution: 1 $\mu$ g/ml