

Product datasheet for **TA362258**

PHACTR2 Rabbit Polyclonal Antibody

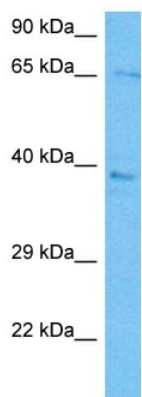
Product data:

Product Type:	Primary Antibodies
Applications:	WB
Reactivity:	Human
Host:	Rabbit
Clonality:	Polyclonal
Immunogen:	The immunogen is a synthetic peptide directed towards the middle region of human PHACTR2
Specificity:	Expected reactivity: Human
Formulation:	Liquid. Purified antibody supplied in 1x PBS buffer with 0.09% (w/v) sodium azide and 2% sucrose.
Concentration:	lot specific
Purification:	Affinity purified
Conjugation:	Unconjugated
Storage:	For short term use, store at 2-8°C up to 1 week. For long term storage, store at -20°C in small aliquots to prevent freeze-thaw cycles.
Stability:	Shelf life: one year from despatch.
Predicted Protein Size:	69 kDa
Gene Name:	phosphatase and actin regulator 2
Database Link:	NP_001093634.1 Entrez Gene 9749 Human O75167
Background:	The function of this protein remains unknown.
Synonyms:	C6orf56; DKFZp686F18175; KIAA0680; MGC176642



[View online »](#)

Product images:



Host: Rabbit
Target Name: PHACTR2
Sample Type: 293T Cell Lysate
Antibody Dilution: 1.0 μ g/ml

Host: Rabbit
Target Name: PHACTR2
Sample Tissue: Human 293T Whole Cell lysates
Antibody Dilution: 1 μ g/ml