

Product datasheet for **TA362251**

MTMR6 Rabbit Polyclonal Antibody

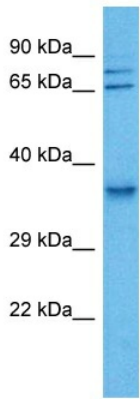
Product data:

Product Type:	Primary Antibodies
Applications:	WB
Reactivity:	Human
Host:	Rabbit
Clonality:	Polyclonal
Immunogen:	The immunogen is a synthetic peptide directed towards the middle region of human MTMR6
Specificity:	Expected reactivity: Human
Formulation:	Liquid. Purified antibody supplied in 1x PBS buffer with 0.09% (w/v) sodium azide and 2% sucrose. <i>Note that this product is shipped as lyophilized powder to China customers.</i>
Concentration:	lot specific
Purification:	Affinity purified
Conjugation:	Unconjugated
Storage:	For short term use, store at 2-8°C up to 1 week. For long term storage, store at -20°C in small aliquots to prevent freeze-thaw cycles.
Stability:	Shelf life: one year from despatch.
Predicted Protein Size:	64 kDa
Gene Name:	myotubularin related protein 6
Database Link:	NP_004676.3 Entrez Gene 9107 Human Q9Y217-2
Background:	Phosphatase that acts on lipids with a phosphoinositol headgroup. Acts as a negative regulator of KCNN4/KCa3.1 channel activity in CD4+ T-cells possibly by decreasing intracellular levels of phosphatidylinositol 3 phosphatase. Negatively regulates proliferation of reactivated CD4+ T-cells.
Synonyms:	MTMR6
Protein Families:	Druggable Genome, Phosphatase



[View online »](#)

Protein Pathways: Fructose and mannose metabolism, Metabolic pathways, Riboflavin metabolism, Thiamine metabolism

Product images:

Host: Rabbit
Target Name: MTMR6
Sample Type: A549 Cell Lysate
Antibody Dilution: 1.0µg/ml

Host: Rabbit
Target Name: MTMR6
Sample Tissue: Human A549 Whole Cell lysates
Antibody Dilution: 1ug/ml