

## Product datasheet for **TA362249**

### ASAP3 Rabbit Polyclonal Antibody

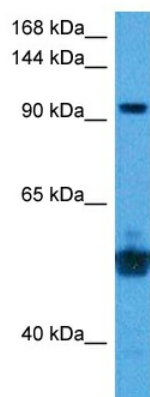
#### Product data:

|                         |   |
|-------------------------|---|
| Product Type:           | Primary Antibodies  |
| Applications:           | WB  |
| Reactivity:             | Human   |
| Host:                   | Rabbit  |
| Clonality:              | Polyclonal  |
| Immunogen:              | The immunogen is a synthetic peptide directed towards the middle region of human ASAP3  |
| Specificity:            | <b>Expected reactivity:</b> Human   |
| Formulation:            | Liquid. Purified antibody supplied in 1x PBS buffer with 0.09% (w/v) sodium azide and 2% sucrose.<br><i>Note that this product is shipped as lyophilized powder to China customers.</i>   |
| Concentration:          | lot specific  |
| Purification:           | Affinity purified   |
| Conjugation:            | Unconjugated  |
| Storage:                | For short term use, store at 2-8°C up to 1 week. For long term storage, store at -20°C in small aliquots to prevent freeze-thaw cycles.   |
| Stability:              | Shelf life: one year from despatch.   |
| Predicted Protein Size: | 110 kDa   |
| Gene Name:              | ArfGAP with SH3 domain, ankyrin repeat and PH domain 3  |
| Database Link:          | <a href="#">NP_001137250.1</a><br><a href="#">Entrez Gene 55616 Human</a><br><a href="#">O43150</a>   |
| Background:             | This gene encodes a member of a subfamily of ADP-ribosylation factor(Arf) GTPase-activating proteins that contain additional ankyrin repeat and pleckstrin homology domains. The Arf GAP domain of this protein catalyzes the hydrolysis of GTP bound to Arf proteins. The encoded protein promotes cell differentiation and migration and has been implicated in cancer cell invasion. Alternative splicing results in multiple transcript variants. |
| Synonyms:               | ACAP4; CENTB6; DDEFL1; FLJ20199; UPLC1  |
| Protein Pathways:       | Endocytosis, Fc gamma R-mediated phagocytosis   |



[View online »](#)

## Product images:



Host: Rabbit  
Target Name: ASAP3  
Sample Type: Neurofibroma Tumor Lysate  
Antibody Dilution: 1.0 $\mu$ g/ml

Host: Rabbit  
Target Name: ASAP3  
Sample Tissue: Human Neurofibroma Tumor lysates  
Antibody Dilution: 1ug/ml