

Product datasheet for **TA362244**

CWC25 Rabbit Polyclonal Antibody

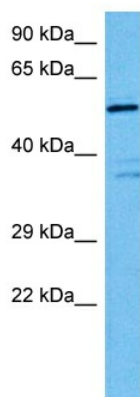
Product data:

Product Type:	Primary Antibodies
Applications:	WB
Reactivity:	Human
Host:	Rabbit
Clonality:	Polyclonal
Immunogen:	The immunogen is a synthetic peptide directed towards the middle region of human CWC25
Specificity:	Expected reactivity: Human
Formulation:	Liquid. Purified antibody supplied in 1x PBS buffer with 0.09% (w/v) sodium azide and 2% sucrose.
Concentration:	lot specific
Purification:	Affinity purified
Conjugation:	Unconjugated
Storage:	For short term use, store at 2-8°C up to 1 week. For long term storage, store at -20°C in small aliquots to prevent freeze-thaw cycles.
Stability:	Shelf life: one year from despatch.
Predicted Protein Size:	50 kDa
Gene Name:	CWC25 spliceosome-associated protein homolog
Database Link:	NP_060218.1 Entrez Gene 54883 Human Q9NXE8
Background:	This gene encodes a factor that is part of the multi-protein C complex involved in pre-mRNA splicing. Alternatively spliced transcripts have been described for this gene.
Synonyms:	1300013D05Rik; AA473636; Ccdc49; R75228; RGD1305258



[View online »](#)

Product images:



Host: Rabbit
Target Name: CWC25
Sample Type: HT1080 Cell Lysate
Antibody Dilution: 1.0 μ g/ml

Host: Rabbit
Target Name: CWC25
Sample Tissue: Human HT1080 Whole Cell lysates
Antibody Dilution: 1 μ g/ml