

## Product datasheet for **TA362233**

### **Rsafd1 (TYW1) Rabbit Polyclonal Antibody**

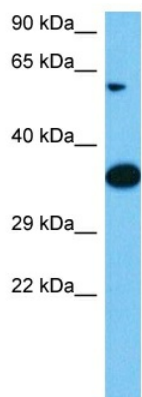
#### **Product data:**

Product Type:	Primary Antibodies
Applications:	WB
Reactivity:	Human
Host:	Rabbit
Clonality:	Polyclonal
Immunogen:	The immunogen is a synthetic peptide directed towards the C terminal region of human TYW1
Specificity:	<b>Expected reactivity:</b> Human
Formulation:	Liquid. Purified antibody supplied in 1x PBS buffer with 0.09% (w/v) sodium azide and 2% sucrose.
Concentration:	lot specific
Purification:	Affinity purified
Conjugation:	Unconjugated
Storage:	For short term use, store at 2-8°C up to 1 week. For long term storage, store at -20°C in small aliquots to prevent freeze-thaw cycles.
Stability:	Shelf life: one year from despatch.
Predicted Protein Size:	34 kDa
Gene Name:	tRNA-yW synthesizing protein 1 homolog
Database Link:	<a href="#">NP_060734.2</a> <a href="#">Entrez Gene 55253 Human</a> <a href="#">Q6NUM6-2</a>
Background:	Wybutosine (yW) is a hypermodified guanosine found in phenylalanine tRNA adjacent to the anticodon that stabilizes codon-anticodon interactions in the ribosome. In yeast, the homolog of this gene is essential for the synthesis of wybutosine. Alternative splicing results in multiple transcript variants.
Synonyms:	FLJ10900; MGC23001; MGC60291; RSAFD1; TYW1A; YPL207W
Protein Families:	Transmembrane



[View online »](#)

## Product images:



Host: Rabbit  
Target Name: TYW1  
Sample Type: Uterus Tumor Lysate  
Antibody Dilution: 1.0 $\mu$ g/ml

Host: Rabbit  
Target Name: TYW1  
Sample Tissue: Human Uterus Tumor lysates  
Antibody Dilution: 1 $\mu$ g/ml