

## Product datasheet for **TA362231**

### Mitochondrial dicarboxylate carrier (SLC25A10) Rabbit Polyclonal Antibody

#### Product data:

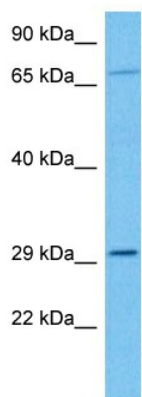
Product Type:	Primary Antibodies
Applications:	WB
Reactivity:	Human
Host:	Rabbit
Clonality:	Polyclonal
Immunogen:	The immunogen is a synthetic peptide directed towards the middle region of human SLC25A10
Specificity:	<b>Expected reactivity:</b> Human
Formulation:	Liquid. Purified antibody supplied in 1x PBS buffer with 0.09% (w/v) sodium azide and 2% sucrose. <i>Note that this product is shipped as lyophilized powder to China customers.</i>
Concentration:	lot specific
Purification:	Affinity purified
Conjugation:	Unconjugated
Storage:	For short term use, store at 2-8°C up to 1 week. For long term storage, store at -20°C in small aliquots to prevent freeze-thaw cycles.
Stability:	Shelf life: one year from despatch.
Predicted Protein Size:	31 kDa
Gene Name:	solute carrier family 25 member 10
Database Link:	<a href="#">NP_001257817.1</a> <a href="#">Entrez Gene 1468 Human</a> <a href="#">Q9UBX3</a>
Background:	This gene encodes a member of a family of proteins that translocate small metabolites across the mitochondrial membrane. The encoded protein exchanges dicarboxylates, such as malate and succinate, for phosphate, sulfate, and other small molecules, thereby providing substrates for metabolic processes including the Krebs cycle and fatty acid synthesis. Alternatively spliced transcript variants encoding multiple isoforms have been observed for this gene.



[View online »](#)

Synonyms: DIC

### Product images:



Host: Rabbit  
Target Name: SLC25A10  
Sample Type: PC-3 Cell Lysate  
Antibody Dilution: 1.0 $\mu$ g/ml

Host: Rabbit  
Target Name: SLC25A10  
Sample Tissue: Human PC-3 Whole Cell lysates  
Antibody Dilution: 1 $\mu$ g/ml