

## Product datasheet for TA362229

### JIP2 (MAPK8IP2) Rabbit Polyclonal Antibody

#### Product data:

Product Type:	Primary Antibodies
Applications:	WB
Reactivity:	Human
Host:	Rabbit
Clonality:	Polyclonal
Immunogen:	The immunogen is a synthetic peptide directed towards the middle region of human MAPK8IP2
Specificity:	<b>Expected reactivity:</b> Human
Formulation:	Liquid. Purified antibody supplied in 1x PBS buffer with 0.09% (w/v) sodium azide and 2% sucrose. <i>Note that this product is shipped as lyophilized powder to China customers.</i>
Concentration:	lot specific
Purification:	Affinity purified
Conjugation:	Unconjugated
Storage:	For short term use, store at 2-8°C up to 1 week. For long term storage, store at -20°C in small aliquots to prevent freeze-thaw cycles.
Stability:	Shelf life: one year from despatch.
Predicted Protein Size:	90 kDa
Gene Name:	mitogen-activated protein kinase 8 interacting protein 2
Database Link:	<a href="#">NP_036456.1</a> <a href="#">Entrez Gene 23542 Human</a> <a href="#">Q13387</a>
Background:	The protein encoded by this gene is closely related to MAPK8IP1/IB1/JIP-1, a scaffold protein that is involved in the c-Jun amino-terminal kinase signaling pathway. This protein is expressed in brain and pancreatic cells. It has been shown to interact with, and regulate the activity of MAPK8/JNK1, and MAP2K7/MKK7 kinases. This protein thus is thought to function as a regulator of signal transduction by protein kinase cascade in brain and pancreatic beta-cells.



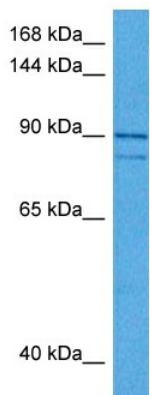
[View online »](#)

**Synonyms:** IB-2; IB2; Islet-brain-2; JIP-2; JIP2; PRKM8IPL

**Protein Families:** Druggable Genome

**Protein Pathways:** MAPK signaling pathway

**Product images:**



Host: Rabbit  
 Target Name: MAPK8IP2  
 Sample Type: Leiomyosarcoma Tumor Lysate  
 Antibody Dilution: 1.0µg/ml

Host: Rabbit  
 Target Name: MAPK8IP2  
 Sample Tissue: Human Leiomyosarcoma Tumor lysates  
 Antibody Dilution: 1ug/ml