

## Product datasheet for **TA362226**

### TUT7 Rabbit Polyclonal Antibody

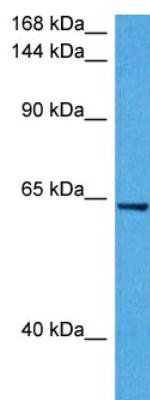
#### Product data:

Product Type:	Primary Antibodies
Applications:	WB
Reactivity:	Human
Host:	Rabbit
Clonality:	Polyclonal
Immunogen:	The immunogen is a synthetic peptide directed towards the N terminal region of human ZCCHC6
Specificity:	<b>Expected reactivity:</b> Human
Formulation:	Liquid. Purified antibody supplied in 1x PBS buffer with 0.09% (w/v) sodium azide and 2% sucrose. <i>Note that this product is shipped as lyophilized powder to China customers.</i>
Concentration:	lot specific
Purification:	Affinity purified
Conjugation:	Unconjugated
Storage:	For short term use, store at 2-8°C up to 1 week. For long term storage, store at -20°C in small aliquots to prevent freeze-thaw cycles.
Stability:	Shelf life: one year from despatch.
Predicted Protein Size:	59 kDa
Gene Name:	zinc finger CCHC-type containing 6
Database Link:	<a href="#">NP_001171988.1</a> <a href="#">Entrez Gene 79670 Human</a> <a href="#">Q5VYS8-3</a>
Synonyms:	DKFZp666B142; DKFZp686C11112; DKFZp686F119; DKFZp686I1269; FLJ13409; HS2; KIAA1711; PAPD6; TUT7



[View online »](#)

## Product images:



Host: Rabbit  
Target Name: ZCCHC6  
Sample Type: MCF7 Cell Lysate  
Antibody Dilution: 1.0 $\mu$ g/ml

Host: Rabbit  
Target Name: ZCCHC6  
Sample Tissue: Human MCF7 Whole Cell lysates  
Antibody Dilution: 1 $\mu$ g/ml