

Product datasheet for **TA362220**

KLC2 Rabbit Polyclonal Antibody

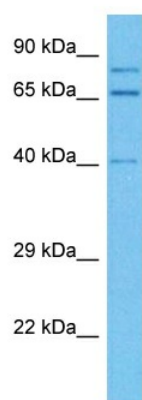
Product data:

Product Type:	Primary Antibodies
Applications:	WB
Reactivity:	Human
Host:	Rabbit
Clonality:	Polyclonal
Immunogen:	The immunogen is a synthetic peptide directed towards the middle terminal region of Human KLC2
Specificity:	Expected reactivity: Human
Formulation:	Liquid. Purified antibody supplied in 1x PBS buffer with 0.09% (w/v) sodium azide and 2% sucrose. <i>Note that this product is shipped as lyophilized powder to China customers.</i>
Concentration:	lot specific
Purification:	Affinity purified
Conjugation:	Unconjugated
Storage:	For short term use, store at 2-8°C up to 1 week. For long term storage, store at -20°C in small aliquots to prevent freeze-thaw cycles.
Stability:	Shelf life: one year from despatch.
Predicted Protein Size:	68 kDa
Gene Name:	kinesin light chain 2
Database Link:	NP_001128246.1 Entrez Gene 64837 Human Q9H0B6
Background:	Kinesin is a molecular motor that generates ATP-dependent movement of vesicles and organelles along microtubules. Kinesin consists of 2 light chains, such as KLC2, and 2 heavy chains in a 1:1 stoichiometric ratio.
Synonyms:	FLJ12387; OTTHUMP00000165218; OTTHUMP00000165219
Protein Families:	Druggable Genome



[View online »](#)

Product images:



Host: Rabbit
Target Name: KLC2
Sample Type: HT1080 Cell Lysate
Antibody Dilution: 1.0 μ g/ml

Host: Rabbit
Target Name: KLC2
Sample Tissue: Human HT1080 Whole Cell lysates
Antibody Dilution: 1 μ g/ml