

Product datasheet for **TA362205**

PIP4K2C Rabbit Polyclonal Antibody

Product data:

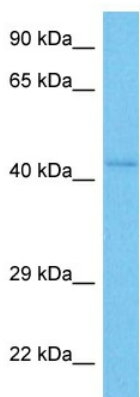
Product Type:	Primary Antibodies
Applications:	WB
Reactivity:	Human
Host:	Rabbit
Clonality:	Polyclonal
Immunogen:	The immunogen is a synthetic peptide directed towards the N terminal region of human PIP4K2C
Specificity:	Expected reactivity: Human
Formulation:	Liquid. Purified antibody supplied in 1x PBS buffer with 0.09% (w/v) sodium azide and 2% sucrose. <i>Note that this product is shipped as lyophilized powder to China customers.</i>
Concentration:	lot specific
Purification:	Affinity purified
Conjugation:	Unconjugated
Storage:	For short term use, store at 2-8°C up to 1 week. For long term storage, store at -20°C in small aliquots to prevent freeze-thaw cycles.
Stability:	Shelf life: one year from despatch.
Predicted Protein Size:	46 kDa
Gene Name:	phosphatidylinositol-5-phosphate 4-kinase type 2 gamma
Database Link:	NP_001139730.1 Entrez Gene 79837 Human Q8TBX8
Background:	May play an important role in the production of Phosphatidylinositol bisphosphate (PIP2), in the endoplasmic reticulum.
Synonyms:	FLJ22055; PIP4KII-gamma; PIP5K2C
Protein Families:	Druggable Genome



[View online »](#)

Protein Pathways: Inositol phosphate metabolism, Phosphatidylinositol signaling system, Regulation of actin cytoskeleton

Product images:



Host: Rabbit
Target Name: PIP4K2C
Sample Type: MCF7 Cell Lysate
Antibody Dilution: 1.0 μ g/ml

Host: Rabbit
Target Name: PIP4K2C
Sample Tissue: Human MCF7 Whole Cell lysates
Antibody Dilution: 1 μ g/ml