

Product datasheet for **TA362204**

CHSY1 Rabbit Polyclonal Antibody

Product data:

Product Type:	Primary Antibodies
Applications:	WB
Reactivity:	Human
Host:	Rabbit
Clonality:	Polyclonal
Immunogen:	The immunogen is a synthetic peptide directed towards the middle region of human CHSY1
Specificity:	Expected reactivity: Human
Formulation:	Liquid. Purified antibody supplied in 1x PBS buffer with 0.09% (w/v) sodium azide and 2% sucrose. <i>Note that this product is shipped as lyophilized powder to China customers.</i>
Concentration:	lot specific
Purification:	Affinity purified
Conjugation:	Unconjugated
Storage:	For short term use, store at 2-8°C up to 1 week. For long term storage, store at -20°C in small aliquots to prevent freeze-thaw cycles.
Stability:	Shelf life: one year from despatch.
Predicted Protein Size:	88 kDa
Gene Name:	chondroitin sulfate synthase 1
Database Link:	NP_055733.2 Entrez Gene 22856 Human Q86X52
Background:	This gene encodes a member of the chondroitin N-acetylgalactosaminyltransferase family. These enzymes possess dual glucuronyltransferase and galactosaminyltransferase activity and play critical roles in the biosynthesis of chondroitin sulfate, a glycosaminoglycan involved in many biological processes including cell proliferation and morphogenesis. Decreased expression of this gene may play a role in colorectal cancer, and mutations in this gene are a cause of temtamy preaxial brachydactyly syndrome.
Synonyms:	CHSY; ChSy-1; CSS1; DKFZp434M032; FLJ58581; KIAA0990

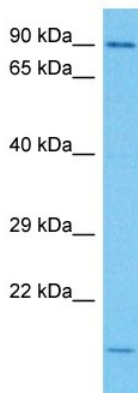


[View online »](#)

Protein Families: Transmembrane

Protein Pathways: Chondroitin sulfate biosynthesis, Metabolic pathways

Product images:



Host: Rabbit
Target Name: CHSY1
Sample Type: LN18 Cell Lysate
Antibody Dilution: 1.0 μ g/ml

Host: Rabbit
Target Name: CHSY1
Sample Tissue: Human LN18 Whole Cell lysates
Antibody Dilution: 1 μ g/ml