

## Product datasheet for **TA362197**

### **C20orf31 (EDEM2) Rabbit Polyclonal Antibody**

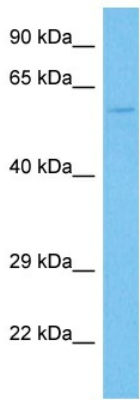
#### **Product data:**

Product Type:	Primary Antibodies
Applications:	WB
Reactivity:	Human
Host:	Rabbit
Clonality:	Polyclonal
Immunogen:	The immunogen is a synthetic peptide directed towards the N terminal region of human EDEM2
Specificity:	<b>Expected reactivity:</b> Human
Formulation:	Liquid. Purified antibody supplied in 1x PBS buffer with 0.09% (w/v) sodium azide and 2% sucrose.
Concentration:	lot specific
Purification:	Affinity purified
Conjugation:	Unconjugated
Storage:	For short term use, store at 2-8°C up to 1 week. For long term storage, store at -20°C in small aliquots to prevent freeze-thaw cycles.
Stability:	Shelf life: one year from despatch.
Predicted Protein Size:	59 kDa
Gene Name:	ER degradation enhancing alpha-mannosidase like protein 2
Database Link:	<a href="#">NP_001138497.1</a> <a href="#">Entrez Gene 55741 Human</a> <a href="#">Q9BV94-2</a>
Background:	In the endoplasmic reticulum (ER), misfolded proteins are retrotranslocated to the cytosol and degraded by the proteasome in a process known as ER-associated degradation (ERAD). EDEM2 belongs to a family of proteins involved in ERAD of glycoproteins.
Synonyms:	bA4204.1; C20orf31; C20orf49; FLJ10783
Protein Families:	Secreted Protein



[View online »](#)

Product images:



Host: Rabbit  
Target Name: EDEM2  
Sample Type: Du145 Cell Lysate  
Antibody Dilution: 1.0µg/ml

Host: Rabbit  
Target Name: EDEM2  
Sample Tissue: Human Du145 Whole Cell lysates  
Antibody Dilution: 1ug/ml