

Product datasheet for **TA362187**

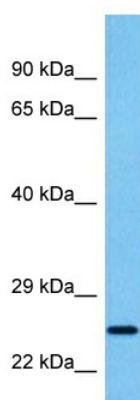
ARL4C Rabbit Polyclonal Antibody

Product data:

Product Type:	Primary Antibodies
Applications:	WB
Reactivity:	Human
Host:	Rabbit
Clonality:	Polyclonal
Immunogen:	The immunogen is a synthetic peptide directed towards the middle terminal region of human ARL4C
Specificity:	Expected reactivity: Human
Formulation:	Liquid. Purified antibody supplied in 1x PBS buffer with 0.09% (w/v) sodium azide and 2% sucrose.
Concentration:	lot specific
Purification:	Affinity purified
Conjugation:	Unconjugated
Storage:	For short term use, store at 2-8°C up to 1 week. For long term storage, store at -20°C in small aliquots to prevent freeze-thaw cycles.
Stability:	Shelf life: one year from despatch.
Predicted Protein Size:	22 kDa
Gene Name:	ADP ribosylation factor like GTPase 4C
Database Link:	NP_001269360.1 Entrez Gene 10123 Human P56559-2
Background:	ADP-ribosylation factor-like 4C is a member of the ADP-ribosylation factor family of GTP-binding proteins. ARL4C is closely similar to ARL4A and ARL4D and each has a nuclear localization signal and an unusually high guanine nucleotide exchange rate. This protein may play a role in cholesterol transport.
Synonyms:	ARL7; LAK



[View online »](#)

Product images:


Host: Rabbit
 Target Name: ARL4C
 Sample Type: U937 Cell Lysate
 Antibody Dilution: 1.0µg/ml

Host: Rabbit
 Target Name: ARL4C
 Sample Tissue: Human U937 Whole Cell lysates
 Antibody Dilution: 1ug/ml