

Product datasheet for **TA362178**

CDC2L5 (CDK13) Rabbit Polyclonal Antibody

Product data:

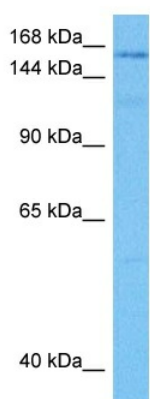
Product Type:	Primary Antibodies
Applications:	WB
Reactivity:	Human
Host:	Rabbit
Clonality:	Polyclonal
Immunogen:	The immunogen is a synthetic peptide directed towards the N terminal region of Human CDK13
Specificity:	Expected reactivity: Human
Formulation:	Liquid. Purified antibody supplied in 1x PBS buffer with 0.09% (w/v) sodium azide and 2% sucrose. <i>Note that this product is shipped as lyophilized powder to China customers.</i>
Concentration:	lot specific
Purification:	Affinity purified
Conjugation:	Unconjugated
Storage:	For short term use, store at 2-8°C up to 1 week. For long term storage, store at -20°C in small aliquots to prevent freeze-thaw cycles.
Stability:	Shelf life: one year from despatch.
Predicted Protein Size:	158 kDa
Gene Name:	cyclin-dependent kinase 13
Database Link:	NP_003709.3 Entrez Gene 8621 Human Q14004-2
Background:	The protein encoded by this gene is a member of the cyclin-dependent serine/threonine protein kinase family. Members of this family are well known for their essential roles as master switches in cell cycle control. The exact function of this protein has not yet been determined, but it may play a role in mRNA processing and may be involved in regulation of hematopoiesis. Alternatively spliced transcript variants have been described.
Synonyms:	CDC2L; CDC2L5; CHED; hCDK13



[View online »](#)

Protein Families: Druggable Genome, Protein Kinase

Product images:



Host: Rabbit
Target Name: CDK13
Sample Type: HCT116 Cell Lysate
Antibody Dilution: 1.0 μ g/ml

Host: Rabbit
Target Name: CDK13
Sample Tissue: Human HCT116 Whole Cell lysates
Antibody Dilution: 1 μ g/ml