

Product datasheet for **TA362175**

EXTL2 Rabbit Polyclonal Antibody

Product data:

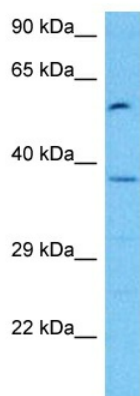
Product Type:	Primary Antibodies
Applications:	WB
Reactivity:	Human
Host:	Rabbit
Clonality:	Polyclonal
Immunogen:	The immunogen is a synthetic peptide directed towards the middle terminal region of human EXTL2
Specificity:	Expected reactivity: Human
Formulation:	Liquid. Purified antibody supplied in 1x PBS buffer with 0.09% (w/v) sodium azide and 2% sucrose. <i>Note that this product is shipped as lyophilized powder to China customers.</i>
Concentration:	lot specific
Purification:	Affinity purified
Conjugation:	Unconjugated
Storage:	For short term use, store at 2-8°C up to 1 week. For long term storage, store at -20°C in small aliquots to prevent freeze-thaw cycles.
Stability:	Shelf life: one year from despatch.
Predicted Protein Size:	37 kDa
Gene Name:	exostosin-like glycosyltransferase 2
Database Link:	NP_001028197.1 Entrez Gene 2135 Human Q9UBQ6
Background:	Glycosyltransferase required for the biosynthesis of heparan-sulfate and responsible for the alternating addition of beta-1-4-linked glucuronic acid (GlcA) and alpha-1-4-linked N-acetylglucosamine (GlcNAc) units to nascent heparan sulfate chains.
Synonyms:	alpha-1,4-N-acetylhexosaminyltransferase; EXTR2
Protein Families:	Transmembrane



[View online »](#)

Protein Pathways: Heparan sulfate biosynthesis

Product images:



Host: Rabbit
Target Name: EXTL2
Sample Type: Jurkat Cell Lysate
Antibody Dilution: 1.0 μ g/ml

Host: Rabbit
Target Name: EXTL2
Sample Tissue: Human Jurkat Whole Cell lysates
Antibody Dilution: 1 μ g/ml