

Product datasheet for TA362167

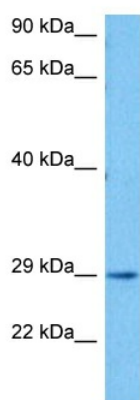
DERL2 Rabbit Polyclonal Antibody

Product data:

Product Type:	Primary Antibodies
Applications:	WB
Reactivity:	Human
Host:	Rabbit
Clonality:	Polyclonal
Immunogen:	The immunogen is a synthetic peptide directed towards the C terminal region of human DERL2
Specificity:	Expected reactivity: Human
Formulation:	Liquid. Purified antibody supplied in 1x PBS buffer with 0.09% (w/v) sodium azide and 2% sucrose.
Concentration:	lot specific
Purification:	Affinity purified
Conjugation:	Unconjugated
Storage:	For short term use, store at 2-8°C up to 1 week. For long term storage, store at -20°C in small aliquots to prevent freeze-thaw cycles.
Stability:	Shelf life: one year from despatch.
Predicted Protein Size:	28 kDa
Gene Name:	derlin 2
Database Link:	NP_001291708.1 Entrez Gene 51009 Human Q9GZP9
Background:	Proteins that are unfolded or misfolded in the endoplasmic reticulum (ER) must be refolded or degraded to maintain the homeostasis of the ER. DERL2 is involved in the degradation of misfolded glycoproteins in the ER.
Synonyms:	CGI-101; DER2; derlin-2; DERtrin-2; F-LAN-1; F-LANa; FLANa

[View online »](#)

Product images:



Host: Rabbit
Target Name: DERL2
Sample Type: Jurkat Cell Lysate
Antibody Dilution: 1.0µg/ml

Host: Rabbit
Target Name: DERL2
Sample Tissue: Human Jurkat Whole Cell lysates
Antibody Dilution: 1ug/ml