

Product datasheet for **TA362161**

Pyrophosphatase 1 (PPA1) Rabbit Polyclonal Antibody

Product data:

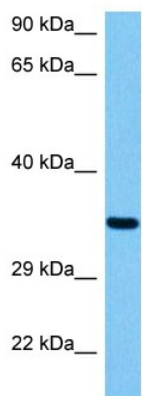
Product Type:	Primary Antibodies
Applications:	WB
Reactivity:	Human
Host:	Rabbit
Clonality:	Polyclonal
Immunogen:	The immunogen is a synthetic peptide directed towards the middle region of human PPA1
Specificity:	Expected reactivity: Human
Formulation:	Liquid. Purified antibody supplied in 1x PBS buffer with 0.09% (w/v) sodium azide and 2% sucrose. <i>Note that this product is shipped as lyophilized powder to China customers.</i>
Concentration:	lot specific
Purification:	Affinity purified
Conjugation:	Unconjugated
Storage:	For short term use, store at 2-8°C up to 1 week. For long term storage, store at -20°C in small aliquots to prevent freeze-thaw cycles.
Stability:	Shelf life: one year from despatch.
Predicted Protein Size:	33 kDa
Gene Name:	pyrophosphatase (inorganic) 1
Database Link:	NP_066952.1 Entrez Gene 5464 Human Q15181
Background:	The protein encoded by this gene is a member of the inorganic pyrophosphatase (PPase) family. PPases catalyze the hydrolysis of pyrophosphate to inorganic phosphate, which is important for the phosphate metabolism of cells. Studies of a similar protein in bovine suggested a cytoplasmic localization of this enzyme.
Synonyms:	IOPPP; MGC111556; PP; PP1; Ppase; SID6-8061
Protein Families:	ES Cell Differentiation/IPS



[View online »](#)

Protein Pathways: Oxidative phosphorylation

Product images:



Host: Rabbit
Target Name: PPA1
Sample Type: Jurkat Cell Lysate
Antibody Dilution: 1.0 μ g/ml

Host: Rabbit
Target Name: PPA1
Sample Tissue: Human Jurkat Whole Cell lysates
Antibody Dilution: 1 μ g/ml