

## Product datasheet for **TA362157**

### Arp3 (ACTR3) Rabbit Polyclonal Antibody

#### Product data:

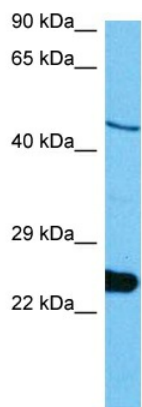
Product Type:	Primary Antibodies
Applications:	WB
Reactivity:	Human
Host:	Rabbit
Clonality:	Polyclonal
Immunogen:	The immunogen is a synthetic peptide directed towards the middle terminal region of human ACTR3
Specificity:	<b>Expected reactivity:</b> Human
Formulation:	Liquid. Purified antibody supplied in 1x PBS buffer with 0.09% (w/v) sodium azide and 2% sucrose. <i>Note that this product is shipped as lyophilized powder to China customers.</i>
Concentration:	lot specific
Purification:	Affinity purified
Conjugation:	Unconjugated
Storage:	For short term use, store at 2-8°C up to 1 week. For long term storage, store at -20°C in small aliquots to prevent freeze-thaw cycles.
Stability:	Shelf life: one year from despatch.
Predicted Protein Size:	45 kDa
Gene Name:	ARP3 actin-related protein 3 homolog (yeast)
Database Link:	<a href="#">NP_005712.1</a> <a href="#">Entrez Gene 10096 Human</a> <a href="#">P61158</a>
Background:	The specific function of this gene has not yet been determined; however, the protein it encodes is known to be a major constituent of the ARP2/3 complex. This complex is located at the cell surface and is essential to cell shape and motility through lamellipodial actin assembly and protrusion. Three transcript variants encoding two different isoforms have been found for this gene.
Synonyms:	ARP3



[View online >](#)

Protein Families: Druggable Genome

### Product images:



Host: Rabbit  
Target Name: ACTR3  
Sample Type: Mesenchymoma Tumor Lysate  
Antibody Dilution: 1.0 $\mu$ g/ml

Host: Rabbit  
Target Name: ACTR3  
Sample Tissue: Human Mesenchymoma Tumor lysates  
Antibody Dilution: 1  $\mu$ g/ml