

Product datasheet for **TA362150**

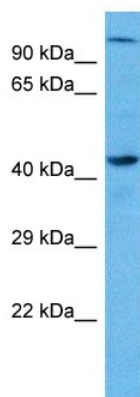
WSB1 Rabbit Polyclonal Antibody

Product data:

Product Type:	Primary Antibodies
Applications:	WB
Reactivity:	Human
Host:	Rabbit
Clonality:	Polyclonal
Immunogen:	The immunogen is a synthetic peptide directed towards the middle region of human WSB1
Specificity:	Expected reactivity: Human
Formulation:	Liquid. Purified antibody supplied in 1x PBS buffer with 0.09% (w/v) sodium azide and 2% sucrose. <i>Note that this product is shipped as lyophilized powder to China customers.</i>
Concentration:	lot specific
Purification:	Affinity purified
Conjugation:	Unconjugated
Storage:	For short term use, store at 2-8°C up to 1 week. For long term storage, store at -20°C in small aliquots to prevent freeze-thaw cycles.
Stability:	Shelf life: one year from despatch.
Predicted Protein Size:	46 kDa
Gene Name:	WD repeat and SOCS box containing 1
Database Link:	NP_056441.6 Entrez Gene 26118 Human Q9Y6I7
Background:	This gene encodes a member of the WD-protein subfamily. This protein shares a high sequence identity to mouse and chick proteins. It contains several WD-repeats spanning most of the protein and an SOCS box in the C-terminus. Alternatively spliced transcript variants encoding distinct isoforms have been found for this gene.
Synonyms:	DKFZp564A122; DKFZp564B0482; SWIP1; WSB-1
Protein Families:	Druggable Genome



[View online »](#)

Product images:

Host: Rabbit
Target Name: WSB1
Sample Type: OVCAR-3 Cell Lysate
Antibody Dilution: 1.0 μ g/ml

Host: Rabbit
Target Name: WSB1
Sample Tissue: Human OVCAR-3 Whole Cell lysates
Antibody Dilution: 1 μ g/ml