

Product datasheet for **TA362140**

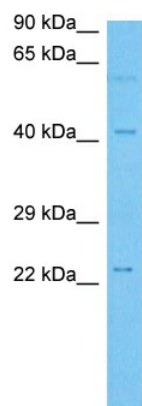
CNDP2 Rabbit Polyclonal Antibody

Product data:

Product Type:	Primary Antibodies
Applications:	WB
Reactivity:	Human
Host:	Rabbit
Clonality:	Polyclonal
Immunogen:	The immunogen is a synthetic peptide directed towards the C terminal region of human CNDP2
Specificity:	Expected reactivity: Human
Formulation:	Liquid. Purified antibody supplied in 1x PBS buffer with 0.09% (w/v) sodium azide and 2% sucrose. <i>Note that this product is shipped as lyophilized powder to China customers.</i>
Concentration:	lot specific
Purification:	Affinity purified
Conjugation:	Unconjugated
Storage:	For short term use, store at 2-8°C up to 1 week. For long term storage, store at -20°C in small aliquots to prevent freeze-thaw cycles.
Stability:	Shelf life: one year from despatch.
Predicted Protein Size:	43 kDa
Gene Name:	CNDP dipeptidase 2 (metallopeptidase M20 family)
Database Link:	NP_001161971.1 Entrez Gene 55748 Human Q96KP4-2
Background:	CNDP2, also known as tissue carnosinase and peptidase A (EC 3.4.13.18), is a nonspecific dipeptidase rather than a selective carnosinase.
Synonyms:	CN2; CPGL; FLJ10830; HsT2298; PEPA
Protein Families:	Protease



[View online »](#)

Product images:

Host: Rabbit
Target Name: CNDP2
Sample Type: LN18 Cell Lysate
Antibody Dilution: 1.0 μ g/ml

Host: Rabbit
Target Name: CNDP2
Sample Tissue: Human LN18 Whole Cell lysates
Antibody Dilution: 1 μ g/ml