

Product datasheet for **TA362136**

Caldesmon (CALD1) Rabbit Polyclonal Antibody

Product data:

Product Type:	Primary Antibodies
Applications:	WB
Reactivity:	Human
Host:	Rabbit
Clonality:	Polyclonal
Immunogen:	The immunogen is a synthetic peptide directed towards the C terminal region of human CALD1
Specificity:	Expected reactivity: Human
Formulation:	Liquid. Purified antibody supplied in 1x PBS buffer with 0.09% (w/v) sodium azide and 2% sucrose. <i>Note that this product is shipped as lyophilized powder to China customers.</i>
Concentration:	lot specific
Purification:	Affinity purified
Conjugation:	Unconjugated
Storage:	For short term use, store at 2-8°C up to 1 week. For long term storage, store at -20°C in small aliquots to prevent freeze-thaw cycles.
Stability:	Shelf life: one year from despatch.
Predicted Protein Size:	58 kDa
Gene Name:	caldesmon 1
Database Link:	NP_004333.1 Entrez Gene 800 Human Q05682-5



[View online »](#)

Background:

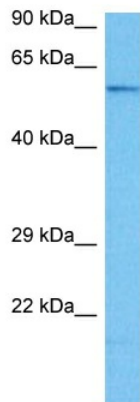
This gene encodes a calmodulin- and actin-binding protein that plays an essential role in the regulation of smooth muscle and nonmuscle contraction. The conserved domain of this protein possesses the binding activities to Ca(2+)-calmodulin, actin, tropomyosin, myosin, and phospholipids. This protein is a potent inhibitor of the actin-tropomyosin activated myosin MgATPase, and serves as a mediating factor for Ca(2+)-dependent inhibition of smooth muscle contraction. Alternative splicing of this gene results in multiple transcript variants encoding distinct isoforms.

Synonyms:

CAD; CDM; H-CAD; HCAD; L-CAD; LCAD; MGC21352; NAG22; OTTHUMP00000207949; OTTHUMP00000207954

Protein Pathways:

Vascular smooth muscle contraction

Product images:


Host: Rabbit
 Target Name: CALD1
 Sample Type: K562 Cell Lysate
 Antibody Dilution: 1.0µg/ml

Host: Rabbit
 Target Name: CALD1
 Sample Tissue: Human K562 Whole Cell lysates
 Antibody Dilution: 1ug/ml