

## Product datasheet for **TA362133**

### Annexin A11 (ANXA11) Rabbit Polyclonal Antibody

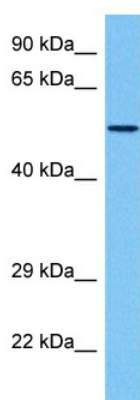
#### Product data:

Product Type:	Primary Antibodies
Applications:	WB
Reactivity:	Human
Host:	Rabbit
Clonality:	Polyclonal
Immunogen:	The immunogen is a synthetic peptide directed towards the middle region of human ANXA11
Specificity:	<b>Expected reactivity:</b> Human
Formulation:	Liquid. Purified antibody supplied in 1x PBS buffer with 0.09% (w/v) sodium azide and 2% sucrose. <i>Note that this product is shipped as lyophilized powder to China customers.</i>
Concentration:	lot specific
Purification:	Affinity purified
Conjugation:	Unconjugated
Storage:	For short term use, store at 2-8°C up to 1 week. For long term storage, store at -20°C in small aliquots to prevent freeze-thaw cycles.
Stability:	Shelf life: one year from despatch.
Predicted Protein Size:	55 kDa
Gene Name:	annexin A11
Database Link:	<a href="#">NP_001148.1</a> <a href="#">Entrez Gene 311 Human</a> <a href="#">P50995</a>
Background:	This gene encodes a member of the annexin family, a group of calcium-dependent phospholipid-binding proteins. Annexins have unique N-terminal domains and conserved C-terminal domains, which contain calcium-dependent phospholipid-binding sites. The encoded protein is a 56-kD antigen recognized by sera from patients with various autoimmune diseases. Several transcript variants encoding two different isoforms have been identified.
Synonyms:	Annexin-11; ANX11; CAP-50; CAP50; OTTHUMP00000019957; OTTHUMP00000019958



[View online »](#)

## Product images:



Host: Rabbit  
Target Name: ANXA11  
Sample Type: HeLa Cell Lysate  
Antibody Dilution: 1.0 $\mu$ g/ml

Host: Rabbit  
Target Name: ANXA11  
Sample Tissue: Human HeLa Whole Cell lysates  
Antibody Dilution: 1  $\mu$ g/ml