

## Product datasheet for **TA362131**

### CHST3 Rabbit Polyclonal Antibody

#### Product data:

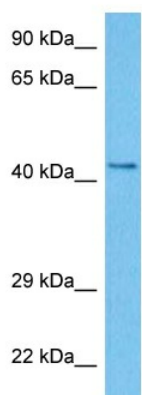
Product Type:	Primary Antibodies
Applications:	WB
Reactivity:	Human
Host:	Rabbit
Clonality:	Polyclonal
Immunogen:	The immunogen is a synthetic peptide directed towards the middle terminal region of human CHST3
Specificity:	<b>Expected reactivity:</b> Human
Formulation:	Liquid. Purified antibody supplied in 1x PBS buffer with 0.09% (w/v) sodium azide and 2% sucrose. <i>Note that this product is shipped as lyophilized powder to China customers.</i>
Concentration:	lot specific
Purification:	Affinity purified
Conjugation:	Unconjugated
Storage:	For short term use, store at 2-8°C up to 1 week. For long term storage, store at -20°C in small aliquots to prevent freeze-thaw cycles.
Stability:	Shelf life: one year from despatch.
Predicted Protein Size:	52 kDa
Gene Name:	carbohydrate sulfotransferase 3
Database Link:	<a href="#">NP_004264.2</a> <a href="#">Entrez Gene 9469 Human</a> <a href="#">Q7LGC8</a>
Background:	This gene encodes an enzyme which catalyzes the sulfation of chondroitin, a proteoglycan found in the extracellular matrix and most cells which is involved in cell migration and differentiation. Mutations in this gene are associated with spondylepiphyseal dysplasia and humerospinal dysostosis.
Synonyms:	C6ST; C6ST-1; C6ST1; GST-0; HSD
Protein Families:	Transmembrane



[View online »](#)

Protein Pathways: Chondroitin sulfate biosynthesis

### Product images:



Host: Rabbit  
Target Name: CHST3  
Sample Type: HCT15 Cell Lysate  
Antibody Dilution: 1.0 $\mu$ g/ml

Host: Rabbit  
Target Name: CHST3  
Sample Tissue: Human HCT15 Whole Cell lysates  
Antibody Dilution: 1 $\mu$ g/ml