

## Product datasheet for **TA362118**

### SLCO4A1 Rabbit Polyclonal Antibody

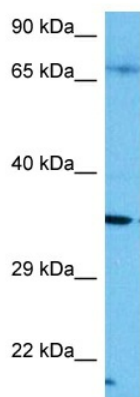
#### Product data:

Product Type:	Primary Antibodies
Applications:	WB
Reactivity:	Human
Host:	Rabbit
Clonality:	Polyclonal
Immunogen:	The immunogen is a synthetic peptide directed towards the middle region of human SLCO4A1
Specificity:	<b>Expected reactivity:</b> Human
Formulation:	Liquid. Purified antibody supplied in 1x PBS buffer with 0.09% (w/v) sodium azide and 2% sucrose.
Concentration:	lot specific
Purification:	Affinity purified
Conjugation:	Unconjugated
Storage:	For short term use, store at 2-8°C up to 1 week. For long term storage, store at -20°C in small aliquots to prevent freeze-thaw cycles.
Stability:	Shelf life: one year from despatch.
Predicted Protein Size:	79 kDa
Gene Name:	solute carrier organic anion transporter family member 4A1
Database Link:	<a href="#">NP_057438.3</a> <a href="#">Entrez Gene 28231 Human</a> <a href="#">Q96BD0</a>
Background:	Mediates the Na <sup>+</sup> -independent transport of organic anions such as the thyroid hormones T3 (triiodo-L-thyronine), T4 (thyroxine) and rT3, and of estrone-3-sulfate and taurocholate.
Synonyms:	OATP-E; OATP-RP1; OATP1; OATP4A1; OATPE; OATPRP1; OTTHUMP00000031493; POAT; SLC21A12
Protein Families:	Transmembrane



[View online »](#)

## Product images:



Host: Rabbit  
Target Name: SLCO4A1  
Sample Type: COLO205 Cell Lysate  
Antibody Dilution: 1.0 $\mu$ g/ml

Host: Rabbit  
Target Name: SLCO4A1  
Sample Tissue: Human COLO205 Whole Cell lysates  
Antibody Dilution: 1 $\mu$ g/ml