

## Product datasheet for **TA362108**

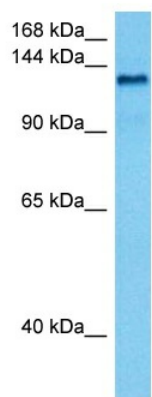
### CTR9 Rabbit Polyclonal Antibody

#### Product data:

Product Type:	Primary Antibodies
Applications:	WB
Reactivity:	Human
Host:	Rabbit
Clonality:	Polyclonal
Immunogen:	The immunogen is a synthetic peptide directed towards the C terminal region of human CTR9
Specificity:	<b>Expected reactivity:</b> Human
Formulation:	Liquid. Purified antibody supplied in 1x PBS buffer with 0.09% (w/v) sodium azide and 2% sucrose. <i>Note that this product is shipped as lyophilized powder to China customers.</i>
Concentration:	lot specific
Purification:	Affinity purified
Conjugation:	Unconjugated
Storage:	For short term use, store at 2-8°C up to 1 week. For long term storage, store at -20°C in small aliquots to prevent freeze-thaw cycles.
Stability:	Shelf life: one year from despatch.
Predicted Protein Size:	133 kDa
Gene Name:	CTR9 homolog, Paf1/RNA polymerase II complex component
Database Link:	<a href="#">NP_055448.1</a> <a href="#">Entrez Gene 9646 Human</a> <a href="#">Q6PD62-1</a>
Background:	CTR9, parafibromin, LEO1, and PAF1 form the PAF protein complex, which associates with the RNA polymerase II subunit POLR2A and with a histone methyltransferase complex.
Synonyms:	KIAA0155; p150; p150TSP; SH2BP1; TSBP
Protein Families:	Protease



[View online »](#)

**Product images:**

Host: Rabbit  
Target Name: CTR9  
Sample Type: HeLa Cell Lysate  
Antibody Dilution: 1.0 $\mu$ g/ml

Host: Rabbit  
Target Name: CTR9  
Sample Tissue: Human HeLa Whole Cell lysates  
Antibody Dilution: 1  $\mu$ g/ml