

Product datasheet for **TA362103**

CYP2U1 Rabbit Polyclonal Antibody

Product data:

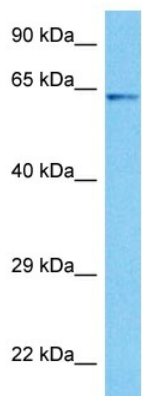
Product Type:	Primary Antibodies
Applications:	WB
Reactivity:	Human
Host:	Rabbit
Clonality:	Polyclonal
Immunogen:	The immunogen is a synthetic peptide directed towards the middle region of human CYP2U1
Specificity:	Expected reactivity: Human
Formulation:	Liquid. Purified antibody supplied in 1x PBS buffer with 0.09% (w/v) sodium azide and 2% sucrose. <i>Note that this product is shipped as lyophilized powder to China customers.</i>
Concentration:	lot specific
Purification:	Affinity purified
Conjugation:	Unconjugated
Storage:	For short term use, store at 2-8°C up to 1 week. For long term storage, store at -20°C in small aliquots to prevent freeze-thaw cycles.
Stability:	Shelf life: one year from despatch.
Predicted Protein Size:	59 kDa
Gene Name:	cytochrome P450 family 2 subfamily U member 1
Database Link:	NP_898898.1 Entrez Gene 113612 Human Q7Z449
Background:	This gene encodes a member of the cytochrome P450 superfamily of enzymes. The cytochrome P450 proteins are monooxygenases which catalyze many reactions involved in drug metabolism and synthesis of cholesterol, steroids and other lipids. This enzyme is a hydroxylase that metabolizes arachidonic acid, docosahexaenoic acid, and other long chain fatty acids.
Synonyms:	P450TEC
Protein Families:	Druggable Genome, P450, Transmembrane



[View online »](#)

Protein Pathways: Arachidonic acid metabolism, Metabolic pathways

Product images:



Host: Rabbit
Target Name: CYP2U1
Sample Type: PANC1 Cell Lysate
Antibody Dilution: 1.0 μ g/ml

Host: Rabbit
Target Name: CYP2U1
Sample Tissue: Human PANC1 Whole Cell lysates
Antibody Dilution: 1 μ g/ml