

Product datasheet for **TA362099**

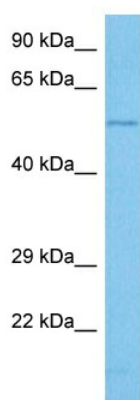
SLC6A13 Rabbit Polyclonal Antibody

Product data:

Product Type:	Primary Antibodies
Applications:	WB
Reactivity:	Human
Host:	Rabbit
Clonality:	Polyclonal
Immunogen:	The immunogen is a synthetic peptide directed towards the N terminal region of human SLC6A13
Specificity:	Expected reactivity: Human
Formulation:	Liquid. Purified antibody supplied in 1x PBS buffer with 0.09% (w/v) sodium azide and 2% sucrose.
Concentration:	lot specific
Purification:	Affinity purified
Conjugation:	Unconjugated
Storage:	For short term use, store at 2-8°C up to 1 week. For long term storage, store at -20°C in small aliquots to prevent freeze-thaw cycles.
Stability:	Shelf life: one year from despatch.
Predicted Protein Size:	56 kDa
Gene Name:	solute carrier family 6 member 13
Database Link:	NP_001177926.1 Entrez Gene 6540 Human Q9NSD5-2
Background:	Sodium-dependent GABA and taurine transporter. In presynaptic terminals, regulates GABA signaling termination through GABA uptake. May also be involved in beta-alanine transport.
Synonyms:	GAT-2; GAT2
Protein Families:	Druggable Genome, Transmembrane



[View online »](#)

Product images:

Host: Rabbit
Target Name: SLC6A13
Sample Type: PC-3 Cell Lysate
Antibody Dilution: 1.0 μ g/ml

Host: Rabbit
Target Name: SLC6A13
Sample Tissue: Human PC-3 Whole Cell lysates
Antibody Dilution: 1 μ g/ml