

## Product datasheet for **TA362089**

### LPHN3 (ADGRL3) Rabbit Polyclonal Antibody

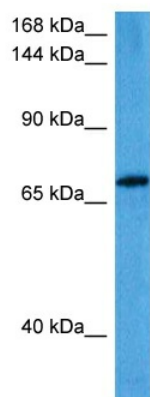
#### Product data:

Product Type:	Primary Antibodies
Applications:	WB
Reactivity:	Human
Host:	Rabbit
Clonality:	Polyclonal
Immunogen:	The immunogen is a synthetic peptide directed towards the middle region of human LPHN3
Specificity:	<b>Expected reactivity:</b> Human
Formulation:	Liquid. Purified antibody supplied in 1x PBS buffer with 0.09% (w/v) sodium azide and 2% sucrose. <i>Note that this product is shipped as lyophilized powder to China customers.</i>
Concentration:	lot specific
Purification:	Affinity purified
Conjugation:	Unconjugated
Storage:	For short term use, store at 2-8°C up to 1 week. For long term storage, store at -20°C in small aliquots to prevent freeze-thaw cycles.
Stability:	Shelf life: one year from despatch.
Predicted Protein Size:	77 kDa
Gene Name:	adhesion G protein-coupled receptor L3
Database Link:	<a href="#">NP_056051.2</a> <a href="#">Entrez Gene 23284 Human</a> <a href="#">Q9HAR2-3</a>
Background:	This gene encodes a member of the latrophilin subfamily of G-protein coupled receptors (GPCR). Latrophilins may function in both cell adhesion and signal transduction. In experiments with non-human species, endogenous proteolytic cleavage within a cysteine-rich GPS (G-protein-coupled-receptor proteolysis site) domain resulted in two subunits (a large extracellular N-terminal cell adhesion subunit and a subunit with substantial similarity to the secretin/calcitonin family of GPCRs) being non-covalently bound at the cell membrane.
Protein Families:	Druggable Genome, GPCR, Transmembrane



[View online »](#)

## Product images:



Host: Rabbit  
Target Name: LPHN3  
Sample Type: 293T Cell Lysate  
Antibody Dilution: 1.0 $\mu$ g/ml

Host: Rabbit  
Target Name: LPHN3  
Sample Tissue: Human 293T Whole Cell lysates  
Antibody Dilution: 1 $\mu$ g/ml