

Product datasheet for **TA362079**

AFF4 Rabbit Polyclonal Antibody

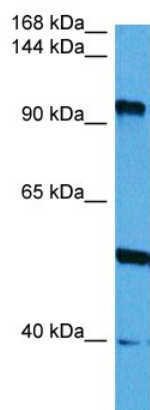
Product data:

Product Type:	Primary Antibodies
Applications:	WB
Reactivity:	Human
Host:	Rabbit
Clonality:	Polyclonal
Immunogen:	The immunogen is a synthetic peptide directed towards the middle region of human AFF4
Specificity:	Expected reactivity: Human
Formulation:	Liquid. Purified antibody supplied in 1x PBS buffer with 0.09% (w/v) sodium azide and 2% sucrose. <i>Note that this product is shipped as lyophilized powder to China customers.</i>
Concentration:	lot specific
Purification:	Affinity purified
Conjugation:	Unconjugated
Storage:	For short term use, store at 2-8°C up to 1 week. For long term storage, store at -20°C in small aliquots to prevent freeze-thaw cycles.
Stability:	Shelf life: one year from despatch.
Predicted Protein Size:	99 kDa
Gene Name:	AF4/FMR2 family member 4
Database Link:	NP_055238.1 Entrez Gene 27125 Human Q9UHB7-2
Background:	The protein encoded by this gene belongs to the AF4 family of transcription factors involved in leukemia. It is a component of the positive transcription elongation factor b (P-TEFb) complex. A chromosomal translocation involving this gene and MLL gene on chromosome 11 is found in infant acute lymphoblastic leukemia with <i>ins(5;11)(q31;q31q23)</i> .
Synonyms:	AF5Q31; MCEF; MGC75036
Protein Families:	Transcription Factors



[View online »](#)

Product images:



Host: Rabbit
Target Name: AFF4
Sample Type: HepG2 Cell Lysate
Antibody Dilution: 1.0 μ g/ml

Host: Rabbit
Target Name: AFF4
Sample Tissue: Human HepG2 Whole Cell lysates
Antibody Dilution: 1 μ g/ml