

Product datasheet for **TA362077**

SRGAP3 Rabbit Polyclonal Antibody

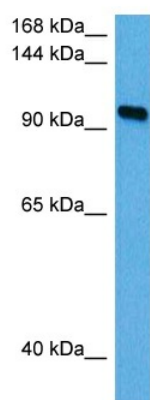
Product data:

Product Type:	Primary Antibodies
Applications:	WB
Reactivity:	Human
Host:	Rabbit
Clonality:	Polyclonal
Immunogen:	The immunogen is a synthetic peptide directed towards the middle region of human SRGAP3
Specificity:	Expected reactivity: Human
Formulation:	Liquid. Purified antibody supplied in 1x PBS buffer with 0.09% (w/v) sodium azide and 2% sucrose. <i>Note that this product is shipped as lyophilized powder to China customers.</i>
Concentration:	lot specific
Purification:	Affinity purified
Conjugation:	Unconjugated
Storage:	For short term use, store at 2-8°C up to 1 week. For long term storage, store at -20°C in small aliquots to prevent freeze-thaw cycles.
Stability:	Shelf life: one year from despatch.
Predicted Protein Size:	118 kDa
Gene Name:	SLIT-ROBO Rho GTPase activating protein 3
Database Link:	NP_001028289.1 Entrez Gene 9901 Human O43295-2
Background:	GTPase-activating protein for RAC1 and perhaps Cdc42, but not for RhoA small GTPase. May attenuate RAC1 signaling in neurons.
Synonyms:	ARHGAP14; KIAA0411; KIAA1156; MEGAP; srGAP2; WRP
Protein Pathways:	Axon guidance



[View online »](#)

Product images:



Host: Rabbit
Target Name: SRGAP3
Sample Type: Jurkat Cell Lysate
Antibody Dilution: 1.0 μ g/ml

Host: Rabbit
Target Name: SRGAP3
Sample Tissue: Human Jurkat Whole Cell lysates
Antibody Dilution: 1 μ g/ml