

Product datasheet for **TA362070**

TRIP6 Rabbit Polyclonal Antibody

Product data:

Product Type:	Primary Antibodies
Applications:	WB
Reactivity:	Human
Host:	Rabbit
Clonality:	Polyclonal
Immunogen:	The immunogen is a synthetic peptide directed towards the middle region of human TRIP6
Specificity:	Expected reactivity: Human
Formulation:	Liquid. Purified antibody supplied in 1x PBS buffer with 0.09% (w/v) sodium azide and 2% sucrose. <i>Note that this product is shipped as lyophilized powder to China customers.</i>
Concentration:	lot specific
Purification:	Affinity purified
Conjugation:	Unconjugated
Storage:	For short term use, store at 2-8°C up to 1 week. For long term storage, store at -20°C in small aliquots to prevent freeze-thaw cycles.
Stability:	Shelf life: one year from despatch.
Predicted Protein Size:	52 kDa
Gene Name:	thyroid hormone receptor interactor 6
Database Link:	NP_003293.2 Entrez Gene 7205 Human Q15654
Background:	This gene is a member of the zyxin family and encodes a protein with three LIM zinc-binding domains. This protein localizes to focal adhesion sites and along actin stress fibers. Recruitment of this protein to the plasma membrane occurs in a lysophosphatidic acid (LPA)-dependent manner and it regulates LPA-induced cell migration. Alternatively spliced variants which encode different protein isoforms have been described; however, not all variants have been fully characterized.
Synonyms:	MGC3837; MGC4423; MGC10556; MGC10558; MGC29959; OIP1; TRIP-6; ZRP-1

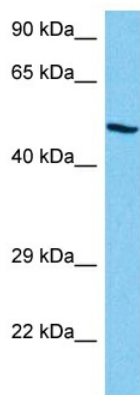


[View online »](#)

Protein Families: Druggable Genome

Protein Pathways: NOD-like receptor signaling pathway

Product images:



Host: Rabbit
Target Name: TRIP6
Sample Type: 786-0 Cell Lysate
Antibody Dilution: 1.0 μ g/ml

Host: Rabbit
Target Name: TRIP6
Sample Tissue: Human 786-0 Whole Cell lysates
Antibody Dilution: 1 μ g/ml