

Product datasheet for **TA362053**

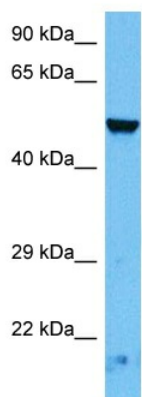
SPRED2 Rabbit Polyclonal Antibody

Product data:

Product Type:	Primary Antibodies
Applications:	WB
Reactivity:	Human
Host:	Rabbit
Clonality:	Polyclonal
Immunogen:	The immunogen is a synthetic peptide directed towards the middle region of human SPRED2
Specificity:	Expected reactivity: Human
Formulation:	Liquid. Purified antibody supplied in 1x PBS buffer with 0.09% (w/v) sodium azide and 2% sucrose. <i>Note that this product is shipped as lyophilized powder to China customers.</i>
Concentration:	lot specific
Purification:	Affinity purified
Conjugation:	Unconjugated
Storage:	For short term use, store at 2-8°C up to 1 week. For long term storage, store at -20°C in small aliquots to prevent freeze-thaw cycles.
Stability:	Shelf life: one year from despatch.
Predicted Protein Size:	48 kDa
Gene Name:	sprouty related EVH1 domain containing 2
Database Link:	NP_001121682.1 Entrez Gene 200734 Human Q7Z698
Background:	SPRED2 is a member of the Sprouty/SPRED family of proteins that regulate growth factor-induced activation of the MAP kinase cascade.
Synonyms:	FLJ21897; FLJ31917; MGC163164; Spred-2
Protein Pathways:	Jak-STAT signaling pathway



[View online »](#)

Product images:

Host: Rabbit
Target Name: SPRED2
Sample Type: HepG2 Cell Lysate
Antibody Dilution: 1.0 μ g/ml

Host: Rabbit
Target Name: SPRED2
Sample Tissue: Human HepG2 Whole Cell lysates
Antibody Dilution: 1 μ g/ml