

## Product datasheet for **TA362051**

### USP6 Rabbit Polyclonal Antibody

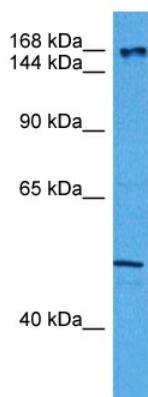
#### Product data:

Product Type:	Primary Antibodies
Applications:	WB
Reactivity:	Human
Host:	Rabbit
Clonality:	Polyclonal
Immunogen:	The immunogen is a synthetic peptide directed towards the C terminal region of human USP6
Specificity:	<b>Expected reactivity:</b> Human
Formulation:	Liquid. Purified antibody supplied in 1x PBS buffer with 0.09% (w/v) sodium azide and 2% sucrose.
Concentration:	lot specific
Purification:	Affinity purified
Conjugation:	Unconjugated
Storage:	For short term use, store at 2-8°C up to 1 week. For long term storage, store at -20°C in small aliquots to prevent freeze-thaw cycles.
Stability:	Shelf life: one year from despatch.
Predicted Protein Size:	159 kDa
Gene Name:	ubiquitin specific peptidase 6
Database Link:	<a href="#">NP_001291213.1</a> <a href="#">Entrez Gene 9098 Human</a> <a href="#">P35125-1</a>
Background:	Deubiquitinase with an ATP-independent isopeptidase activity, cleaving at the C-terminus of the ubiquitin moiety. Catalyzes its own deubiquitination. In vitro, isoform 2, but not isoform 3, shows deubiquitinating activity. Promotes plasma membrane localization of ARF6 and selectively regulates ARF6-dependent endocytic protein trafficking. Is able to initiate tumorigenesis by inducing the production of matrix metalloproteinases following NF-kappa-B activation.
Synonyms:	HRP1; Tre-2; TRE2; TRE17; USP6-short



[View online »](#)

## Product images:



Host: Rabbit  
Target Name: USP6  
Sample Type: HeLa Cell Lysate  
Antibody Dilution: 1.0 $\mu$ g/ml

Host: Rabbit  
Target Name: USP6  
Sample Tissue: Human HeLa Whole Cell lysates  
Antibody Dilution: 1  $\mu$ g/ml