

Product datasheet for **TA362034**

CDC14B Rabbit Polyclonal Antibody

Product data:

Product Type:	Primary Antibodies
Applications:	WB
Reactivity:	Human
Host:	Rabbit
Clonality:	Polyclonal
Immunogen:	The immunogen is a synthetic peptide directed towards the middle region of human CDC14B
Specificity:	Expected reactivity: Human
Formulation:	Liquid. Purified antibody supplied in 1x PBS buffer with 0.09% (w/v) sodium azide and 2% sucrose. <i>Note that this product is shipped as lyophilized powder to China customers.</i>
Concentration:	lot specific
Purification:	Affinity purified
Conjugation:	Unconjugated
Storage:	For short term use, store at 2-8°C up to 1 week. For long term storage, store at -20°C in small aliquots to prevent freeze-thaw cycles.
Stability:	Shelf life: one year from despatch.
Predicted Protein Size:	50 kDa
Gene Name:	cell division cycle 14B
Database Link:	NP_001070649.1 Entrez Gene 8555 Human O60729-2
Background:	The protein encoded by this gene is a member of the dual specificity protein tyrosine phosphatase family. This protein is highly similar to <i>Saccharomyces cerevisiae</i> Cdc14, a protein tyrosine phosphatase involved in the exit of cell mitosis and initiation of DNA replication, which suggests the role in cell cycle control. This protein has been shown to interact with and dephosphorylates tumor suppressor protein p53, and is thought to regulate the function of p53. Alternative splice of this gene results in 3 transcript variants encoding distinct isoforms.



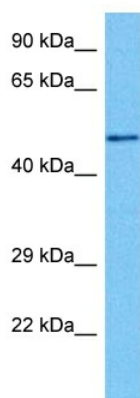
[View online »](#)

Synonyms: Cdc14B1; Cdc14B2; CDC14B3; hCDC14B

Protein Families: Druggable Genome, Phosphatase

Protein Pathways: Cell cycle

Product images:



Host: Rabbit
Target Name: CDC14B
Sample Type: HT1080 Cell Lysate
Antibody Dilution: 1.0 μ g/ml

Host: Rabbit
Target Name: CDC14B
Sample Tissue: Human HT1080 Whole Cell lysates
Antibody Dilution: 1 μ g/ml