

Product datasheet for **TA362028**

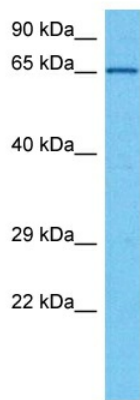
FKBP10 Rabbit Polyclonal Antibody

Product data:

Product Type:	Primary Antibodies
Applications:	WB
Reactivity:	Human
Host:	Rabbit
Clonality:	Polyclonal
Immunogen:	The immunogen is a synthetic peptide directed towards the N terminal region of human FKBP10
Specificity:	Expected reactivity: Human
Formulation:	Liquid. Purified antibody supplied in 1x PBS buffer with 0.09% (w/v) sodium azide and 2% sucrose. <i>Note that this product is shipped as lyophilized powder to China customers.</i>
Concentration:	lot specific
Purification:	Affinity purified
Conjugation:	Unconjugated
Storage:	For short term use, store at 2-8°C up to 1 week. For long term storage, store at -20°C in small aliquots to prevent freeze-thaw cycles.
Stability:	Shelf life: one year from despatch.
Predicted Protein Size:	64 kDa
Gene Name:	FK506 binding protein 10
Database Link:	NP_068758.3 Entrez Gene 60681 Human Q96AY3
Background:	The protein encoded by this gene belongs to the FKBP-type peptidyl-prolyl cis/trans isomerase (PPIase) family. This protein localizes to the endoplasmic reticulum and acts as a molecular chaperone. Alternatively spliced variants encoding different isoforms have been reported, but their biological validity has not been determined.
Synonyms:	FKBP6; FKBP65; FLJ20683; FLJ22041; FLJ23833; hFKBP65; PPIASE; rotamase
Protein Families:	Druggable Genome



[View online »](#)

Product images:

Host: Rabbit
Target Name: FKBP10
Sample Type: Du145 Cell Lysate
Antibody Dilution: 1.0 μ g/ml

Host: Rabbit
Target Name: FKBP10
Sample Tissue: Human Du145 Whole Cell lysates
Antibody Dilution: 1 μ g/ml