

## Product datasheet for **TA362024**

### NME3 Rabbit Polyclonal Antibody

#### Product data:

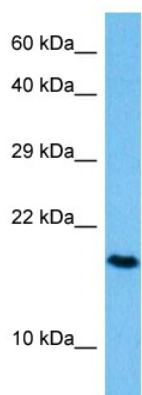
Product Type:	Primary Antibodies
Applications:	WB
Reactivity:	Human
Host:	Rabbit
Clonality:	Polyclonal
Immunogen:	The immunogen is a synthetic peptide directed towards the N terminal region of human NME3
Specificity:	<b>Expected reactivity:</b> Human
Formulation:	Liquid. Purified antibody supplied in 1x PBS buffer with 0.09% (w/v) sodium azide and 2% sucrose. <i>Note that this product is shipped as lyophilized powder to China customers.</i>
Concentration:	lot specific
Purification:	Affinity purified
Conjugation:	Unconjugated
Storage:	For short term use, store at 2-8°C up to 1 week. For long term storage, store at -20°C in small aliquots to prevent freeze-thaw cycles.
Stability:	Shelf life: one year from despatch.
Predicted Protein Size:	18 kDa
Gene Name:	NME/NM23 nucleoside diphosphate kinase 3
Database Link:	<a href="#">NP_002504.2</a> <a href="#">Entrez Gene 4832 Human</a> <a href="#">Q13232</a>
Background:	Major role in the synthesis of nucleoside triphosphates other than ATP. The ATP gamma phosphate is transferred to the NDP beta phosphate via a ping-pong mechanism, using a phosphorylated active-site intermediate. Probably has a role in normal hematopoiesis by inhibition of granulocyte differentiation and induction of apoptosis.
Synonyms:	c371H6.2; DR-nm23; KIAA0516; NDPK-C; NDPKC; NM23-H3; NM23H3
Protein Families:	Druggable Genome



[View online »](#)

Protein Pathways: Metabolic pathways, Purine metabolism, Pyrimidine metabolism

### Product images:



Host: Rabbit  
Target Name: NME3  
Sample Type: 786-0 Cell Lysate  
Antibody Dilution: 1.0 $\mu$ g/ml

Host: Rabbit  
Target Name: NME3  
Sample Tissue: Human 786-0 Whole Cell lysates  
Antibody Dilution: 1 $\mu$ g/ml