

## Product datasheet for **TA362022**

### EPB41L3 Rabbit Polyclonal Antibody

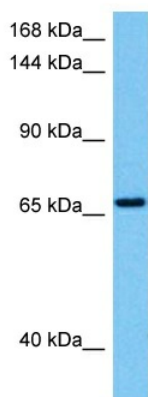
#### Product data:

|                         |   |
|-------------------------|---|
| Product Type:           | Primary Antibodies  |
| Applications:           | WB  |
| Reactivity:             | Human   |
| Host:                   | Rabbit  |
| Clonality:              | Polyclonal  |
| Immunogen:              | The immunogen is a synthetic peptide directed towards the N terminal region of human EPB41L3  |
| Specificity:            | <b>Expected reactivity:</b> Human   |
| Formulation:            | Liquid. Purified antibody supplied in 1x PBS buffer with 0.09% (w/v) sodium azide and 2% sucrose.<br><i>Note that this product is shipped as lyophilized powder to China customers.</i> |
| Concentration:          | lot specific  |
| Purification:           | Affinity purified   |
| Conjugation:            | Unconjugated  |
| Storage:                | For short term use, store at 2-8°C up to 1 week. For long term storage, store at -20°C in small aliquots to prevent freeze-thaw cycles.   |
| Stability:              | Shelf life: one year from despatch.   |
| Predicted Protein Size: | 70 kDa  |
| Gene Name:              | erythrocyte membrane protein band 4.1 like 3  |
| Database Link:          | <a href="#">NP_001268462.1</a><br><a href="#">Entrez Gene 23136 Human</a><br><a href="#">Q9Y2J2-3</a>   |
| Background:             | Tumor suppressor that inhibits cell proliferation and promotes apoptosis. Modulates the activity of protein arginine N-methyltransferases, including PRMT3 and PRMT5.                   |
| Synonyms:               | 4.1B; DAL-1; DAL1; FLJ37633; KIAA0987   |
| Protein Pathways:       | Tight junction  |



[View online »](#)

## Product images:



Host: Rabbit  
Target Name: EPB41L3  
Sample Type: 786-0 Cell Lysate  
Antibody Dilution: 1.0 $\mu$ g/ml

Host: Rabbit  
Target Name: EPB41L3  
Sample Tissue: Human 786-0 Whole Cell lysates  
Antibody Dilution: 1 $\mu$ g/ml