

Product datasheet for **TA362021**

RAB32 Rabbit Polyclonal Antibody

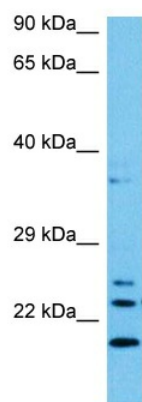
Product data:

| | |
|-------------------------|--|
| Product Type: | Primary Antibodies |
| Applications: | WB |
| Reactivity: | Human |
| Host: | Rabbit |
| Clonality: | Polyclonal |
| Immunogen: | The immunogen is a synthetic peptide directed towards the middle terminal region of human RAB32 |
| Specificity: | Expected reactivity: Human |
| Formulation: | Liquid. Purified antibody supplied in 1x PBS buffer with 0.09% (w/v) sodium azide and 2% sucrose. <i>Note that this product is shipped as lyophilized powder to China customers.</i> |
| Concentration: | lot specific |
| Purification: | Affinity purified |
| Conjugation: | Unconjugated |
| Storage: | For short term use, store at 2-8°C up to 1 week. For long term storage, store at -20°C in small aliquots to prevent freeze-thaw cycles. |
| Stability: | Shelf life: one year from despatch. |
| Predicted Protein Size: | 24 kDa |
| Gene Name: | RAB32, member RAS oncogene family |
| Database Link: | NP_006825.1 Entrez Gene 10981 Human Q13637 |
| Background: | The protein encoded by this gene anchors the type II regulatory subunit of protein kinase A to the mitochondrion and aids in mitochondrial fission. The encoded protein also appears to be involved in autophagy and melanosome secretion. Variations in this gene may be linked to leprosy. |
| Synonyms: | RAB32 |
| Protein Families: | Druggable Genome |



[View online »](#)

Product images:



Host: Rabbit
Target Name: RAB32
Sample Type: ACHN Cell Lysate
Antibody Dilution: 1.0 μ g/ml

Host: Rabbit
Target Name: RAB32
Sample Tissue: Human ACHN Whole Cell lysates
Antibody Dilution: 1 μ g/ml