

Product datasheet for **TA362014**

OSTM1 Rabbit Polyclonal Antibody

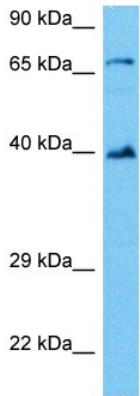
Product data:

Product Type:	Primary Antibodies
Applications:	WB
Reactivity:	Human
Host:	Rabbit
Clonality:	Polyclonal
Immunogen:	The immunogen is a synthetic peptide directed towards the C terminal region of human OSTM1
Specificity:	Expected reactivity: Human
Formulation:	Liquid. Purified antibody supplied in 1x PBS buffer with 0.09% (w/v) sodium azide and 2% sucrose.
Concentration:	lot specific
Purification:	Affinity purified
Conjugation:	Unconjugated
Storage:	For short term use, store at 2-8°C up to 1 week. For long term storage, store at -20°C in small aliquots to prevent freeze-thaw cycles.
Stability:	Shelf life: one year from despatch.
Predicted Protein Size:	36 kDa
Gene Name:	osteopetrosis associated transmembrane protein 1
Database Link:	NP_054747.2 Entrez Gene 28962 Human Q86WC4
Background:	This gene encodes a protein that may be involved in the degradation of G proteins via the ubiquitin-dependent proteasome pathway. The encoded protein binds to members of subfamily A of the regulator of the G-protein signaling (RGS) family through an N-terminal leucine-rich region. This protein also has a central RING finger-like domain and E3 ubiquitin ligase activity. This protein is highly conserved from flies to humans. Defects in this gene may cause the autosomal recessive, infantile malignant form of osteopetrosis.
Synonyms:	GIPN; GL; HSPC019; OPTB5



[View online »](#)

Protein Families: Transmembrane

Product images:

Host: Rabbit
Target Name: OSTM1
Sample Type: K562 Cell Lysate
Antibody Dilution: 1.0 μ g/ml

Host: Rabbit
Target Name: OSTM1
Sample Tissue: Human K562 Whole Cell lysates
Antibody Dilution: 1 ug/ml