

Product datasheet for **TA362006**

OPHN1 Rabbit Polyclonal Antibody

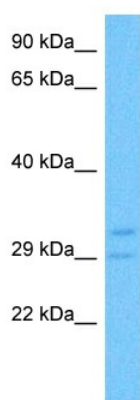
Product data:

Product Type:	Primary Antibodies
Applications:	WB
Reactivity:	Human
Host:	Rabbit
Clonality:	Polyclonal
Immunogen:	The immunogen is a synthetic peptide directed towards the middle region of human OPHN1
Specificity:	Expected reactivity: Human
Formulation:	Liquid. Purified antibody supplied in 1x PBS buffer with 0.09% (w/v) sodium azide and 2% sucrose.
Concentration:	lot specific
Purification:	Affinity purified
Conjugation:	Unconjugated
Storage:	For short term use, store at 2-8°C up to 1 week. For long term storage, store at -20°C in small aliquots to prevent freeze-thaw cycles.
Stability:	Shelf life: one year from despatch.
Predicted Protein Size:	34 kDa
Gene Name:	oligophrenin 1
Database Link:	NP_002538.1 Entrez Gene 4983 Human O60890-2
Background:	This gene encodes a Rho-GTPase-activating protein that promotes GTP hydrolysis of Rho subfamily members. Rho proteins are important mediators of intracellular signal transduction, which affects cell migration and cell morphogenesis. Mutations in this gene are responsible for OPHN1-related X-linked mental retardation with cerebellar hypoplasia and distinctive facial dysmorphism.
Synonyms:	MRX60; OPN1



[View online »](#)

Product images:



Host: Rabbit
Target Name: OPHN1
Sample Type: THP-1 Cell Lysate
Antibody Dilution: 1.0µg/ml

Host: Rabbit
Target Name: OPHN1
Sample Tissue: Human THP-1 Whole Cell lysates
Antibody Dilution: 1ug/ml