

Product datasheet for **TA361994**

TSPY10 Rabbit Polyclonal Antibody

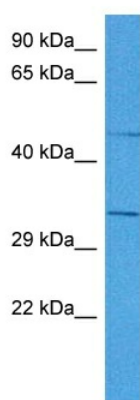
Product data:

Product Type:	Primary Antibodies
Applications:	WB
Reactivity:	Human
Host:	Rabbit
Clonality:	Polyclonal
Immunogen:	The immunogen is a synthetic peptide directed towards the C terminal region of human TSPY1
Specificity:	Expected reactivity: Human
Formulation:	Liquid. Purified antibody supplied in 1x PBS buffer with 0.09% (w/v) sodium azide and 2% sucrose.
Concentration:	lot specific
Purification:	Affinity purified
Conjugation:	Unconjugated
Storage:	For short term use, store at 2-8°C up to 1 week. For long term storage, store at -20°C in small aliquots to prevent freeze-thaw cycles.
Stability:	Shelf life: one year from despatch.
Predicted Protein Size:	33 kDa
Gene Name:	testis specific protein, Y-linked 10
Database Link:	NP_001071165.2 Entrez Gene 728137 Human Entrez Gene 100289087 Human Q01534



[View online »](#)

Product images:



Host: Rabbit
Target Name: TSPY1
Sample Type: Mesenchymoma Tumor Lysate
Antibody Dilution: 1.0µg/ml

Host: Rabbit
Target Name: TSPY1
Sample Tissue: Human Mesenchymoma Tumor lysates
Antibody Dilution: 1ug/ml